



WELCOME

Top Scholars Weekend



Newcomb-Tulane
College

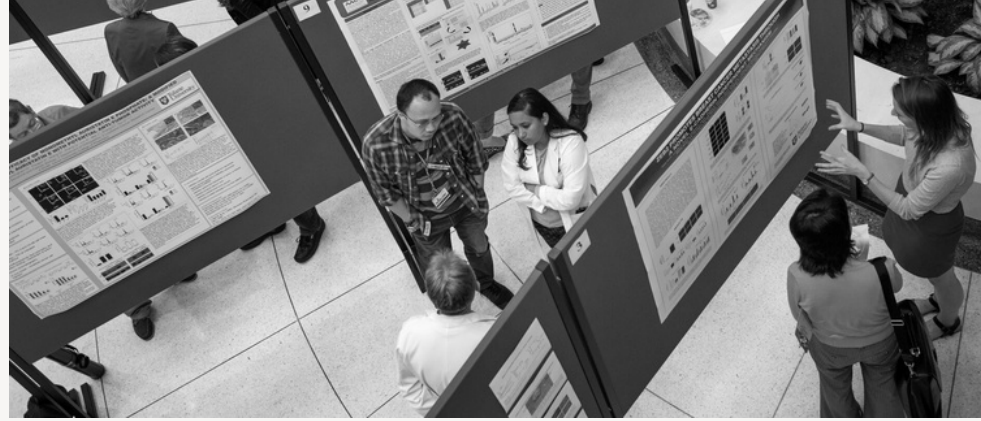
First-Year Honors Scholars

Newcomb-Tulane
College



Meet The Speakers

Office of First-Year Experience
Office of Academic Enrichment





Newcomb-Tulane College

Newcomb-Tulane College is the home of the undergraduate academic experience. As the undergraduate degree-granting body of Tulane University, NTC provides a robust core curriculum, faculty interaction, and opportunities for academic enrichment. NTC guides students along their individual path to academic success, providing a foundation of support and elevated experiences.



College Departments



ACADEMIC
ADVISING



ACADEMIC
EQUITY



ACADEMIC LEARNING &
TUTORING CENTER



ACADEMIC
ENRICHMENT



ACADEMIC
INTEGRITY



CAREER
SERVICES



FELLOWSHIP
ADVISING



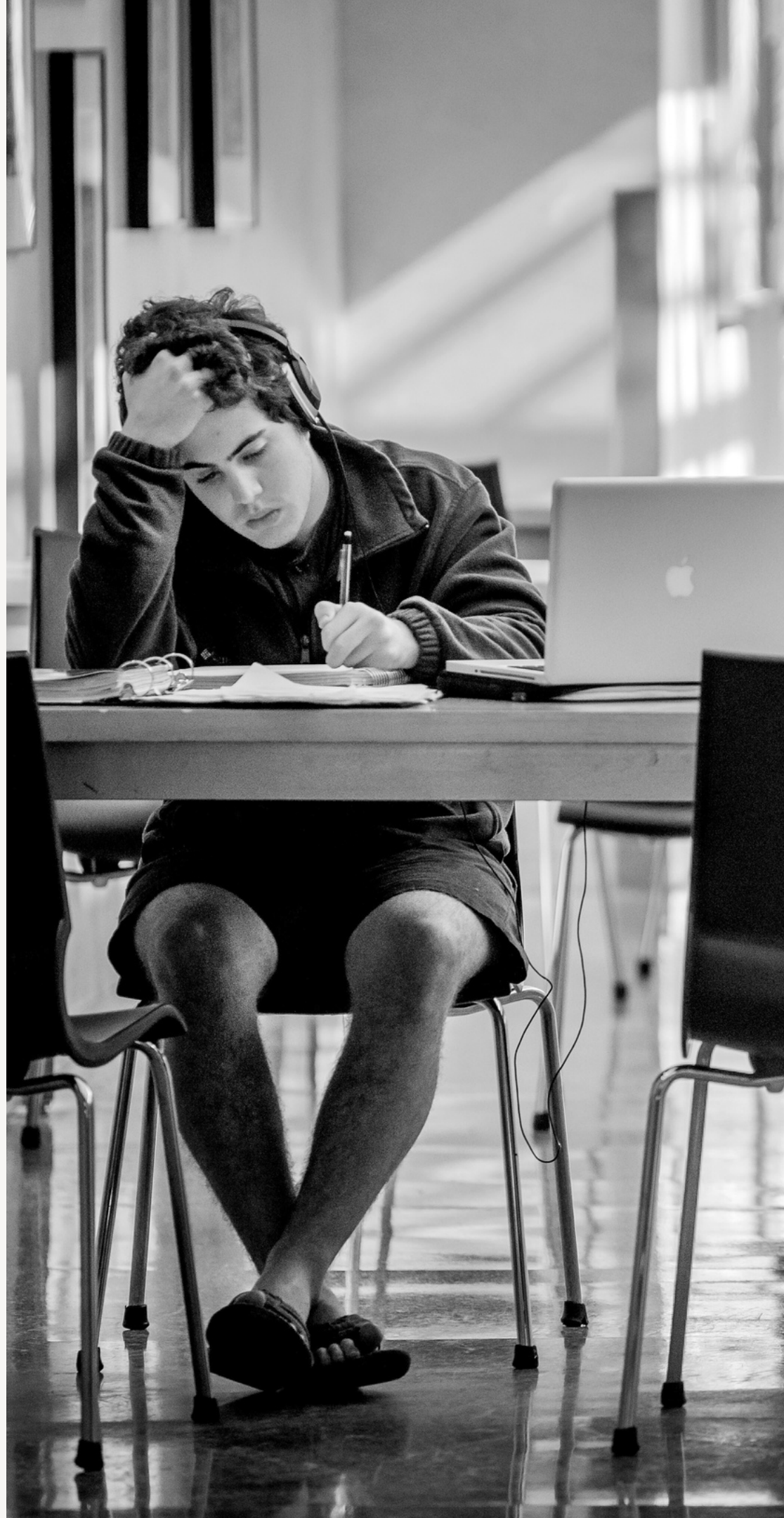
FIRST-YEAR
EXPERIENCE



GLOBAL
EDUCATION



SUCCESS
COACHING



Our Honors Scholars



First-Year Honors Scholars have demonstrated themselves to be **intellectual leaders and innovators** in their high schools.

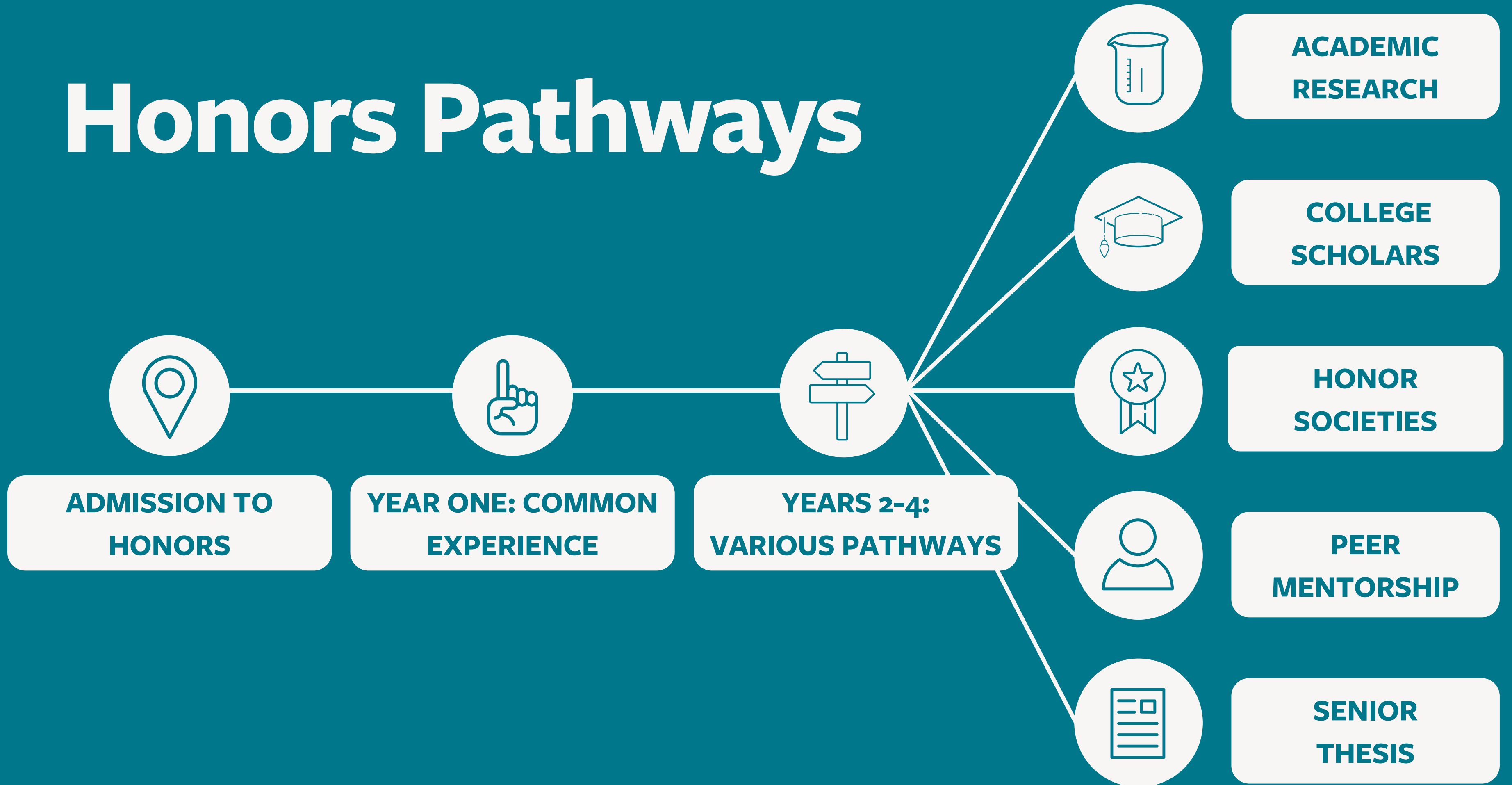


They are **tenacious** in their pursuit of learning and in taking their place on Tulane's campus as provocative thought leaders.



They are **highly curious**, seek challenges, and show a **desire to engage** in rigorous thought that leads to extraordinary insights and ideas.

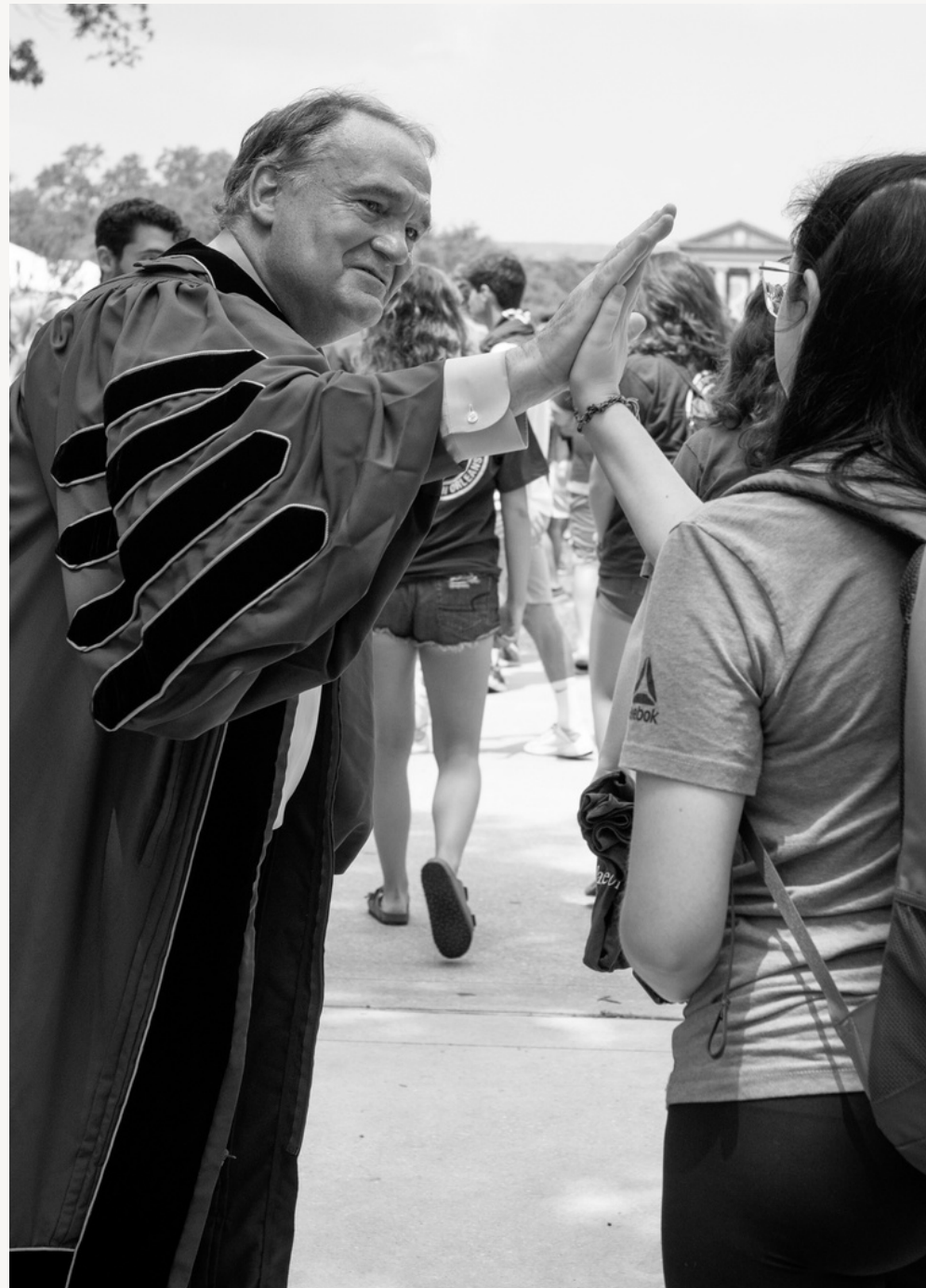
Honors Pathways



First-Year Scholar Experience

Students admitted to Tulane as First-Year Honors Scholars are intellectual leaders and innovators. To support these pursuits, students will be prompted to explore interdisciplinary interests with faculty and peer mentors before embarking on a self-designed experience for their upperclass years at Tulane. Your first-year programming is facilitated by the Office of First-Year Experience.





Your First Year

First-Year Honors Scholars spend their first semester in a Scholar Society, a cluster of two fall-semester classes coupled with out-of-class activities linked together to explore a common theme. Each Society is led by one of Tulane's best faculty who engages you and a small cohort of your peers in intellectual discussions, fieldtrips, and on-campus events. Societies allow students to explore niche interests along with global and local phenomena to expand their realm of knowledge.



What is a Scholar Society

These faculty-led groups, each of which has a specific theme or area of focus, engage through meals, off-campus field trips, on-campus events, and themed discussions.

- Art NOLA
- Books & Reading
- Cultural Engagement
- Feminist Frameworks
- Gray Matter
- Healthcare Innovations
- Health Equity and Indigenous People
- Life & Death in NOLA
- Science of Happiness
- World Development
- World Languages and Cultures



Society Scholar Experience



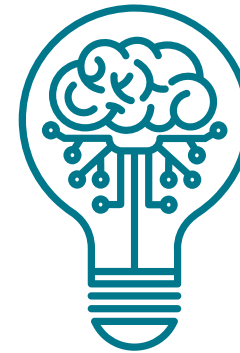
**EXPERIENTIAL
LEARNING**



**HONORS
COLLOQUIUM**



**ONE CORE
COURSE**



**FACULTY & PEER
MENTORSHIP**



**COMMUNITY
BUILDING**





Experiential Learning

Through their Scholar Society, our students are immersed in the campus and the city.

[World Development](#) took the streetcar to visit the historic Cabildo in the French Quarter. During their guided tour, they learned about the contributions of the Spanish to the economic development of New Orleans. [Books and Reading](#) visited a local cemetery for their annual Graveyard Poets event, reading poetry from famous poets. [Grey Matter](#) held a human brain with the spinal cord and major nerves still intact to better understand the nervous system.

Classroom Engagement

During the fall semester, each Scholar Society is paired with two complimentary classes, an Honors Colloquium and a core requirement, both themed around a similar topic. The colloquia is reserved only for Society members and includes experiential learning, such as field trips, dinners, and events, to connect the content to the community around you.



Faculty & Peer Mentorship

Each Scholar Society is led by one of Tulane's distinguished faculty who develops a robust set of out-of-class experiences for their society. Students also build a relationship with their colloquia instructor, a member of faculty who is interested in working with first-year students. Last, students have an upperclass mentor who plays a crucial role in helping First-Year Honors Scholars transition to the academic and social communities of Tulane.



Community Building

Apart from the classes and experiential learning, all 12 societies come together at least once a month to learn about opportunities for high-achieving students at Tulane. Through these experiences, students will begin to design a plan for their sophomore year and beyond.

What This Looks Like

Example: Books and Reading Scholar Society, 14.5 hrs

Monday	Tuesday	Wednesday	Thursday	Friday	Saturday/ Sunday**
<ul style="list-style-type: none"> • 9-950am - Symbolic Logic • 11-1150am - Spanish II • 345-445pm, Weekly Cluster* 	<ul style="list-style-type: none"> • 11-1215pm, Literary Investigations • 2-315pm, Impossible Mothers Colq. • 5-615pm, Intro to Psychology 	<ul style="list-style-type: none"> • 9-950am - Symbolic Logic • 11-1150am - Spanish II • 7-8pm - Chess Club 	<ul style="list-style-type: none"> • 11-1215pm, Literary Investigations • 5-615pm, Intro to Psychology 	<ul style="list-style-type: none"> • 9-950am - Symbolic Logic • 11-1150am - Spanish II 	<ul style="list-style-type: none"> • 10a - Graveyard Poets • 12p - Lunch at Luca Eats

*Each week there will be an hour of time dedicated to showcasing a campus resource, activity, or scholar society meeting.

**Please note, there are not events every weekend. This is just an example.

What This Looks Like

Example: Grey Matter Scholar Society, 17.5hrs

Monday	Tuesday	Wednesday	Thursday	Friday	Saturday/ Sunday**
<ul style="list-style-type: none"> • 8-850am, Calculus 1 • 9-950am - General Chemistry I • 10-1050am, Writing • 12-255pm, General Chemistry I Lab • 345-445pm, Weekly Cluster* 	<ul style="list-style-type: none"> • 11-1215pm - Spanish II • 330-445pm, Thinking About Thinking Colq. • 6-8pm, General Chemistry I 	<ul style="list-style-type: none"> • 8-850am, Calculus 1 • 9-950am, General Chemistry I • 10-1050am, Writing 	<ul style="list-style-type: none"> • 930-1045am, Calculus 1 Recitation • 11-1215pm - Spanish II • 7-10pm - Dance Team Practice 	<ul style="list-style-type: none"> • 8-850am, Calculus 1 • 9-950am - General Chemistry I • 10-1050am, Writing 	<ul style="list-style-type: none"> • 12pm - Lunch with Scholar Society at Dat Dog • 2pm Tour of Tulane Medical School w/ student meet and greet

*Each week there will be an hour of time dedicated to showcasing a campus resource, activity, or scholar society meeting.

**Please note, there are not events every weekend. This is just an example.



How to Enroll

Scholar Society spots are on a first-come, first-served basis. The application opens on Wednesday, March 6 at 5p CST and closes at 11:59p CST on Friday, March 15. Prior to course registration, you will receive official confirmation of your society and be pre-registered for all Society courses so you can build the rest of your fall schedule around this course cluster.

Example

Step 1: Choose your preferred Scholar Society

WORLD LANGUAGES

COLLOQUIUM

Step 2: Choose 1 Colloquium class that pairs with the Scholar Society

TOLKIEN AS TRANSLATOR

TALKING NEW ORLEANS

Step 3: After you have chosen your Scholar Society and Colloquium, you are automatically enrolled in your NTC Core Class.

FRANCE SINCE 1789



Why Enroll

Scholar Societies are a proven way to meet other high-achieving students and build early connections with dynamic faculty. The small cohort allows for early, meaningful relationships with like-minded peers and provides an easier transition to college. Complimentary courses integrate concepts and allow for more interesting and holistic learning.

Societies are one way to meet faculty and students, but it is certainly not the only way. If you think you might want to put your time and energy into other campus opportunities, a Society might not be a good fit for you. Only those participating in a Society will be considered a First-Year Honors Scholar.

Sophomore Year and Beyond

In their second year, NTC programs for high-achieving students will focus on intellectual pathways. Continuing scholars will be empowered to choose from a variety of opportunities to develop their skills and foundations of knowledge, demonstrate their accomplishments, and discern who they are and the lives they want to lead as scholars, during and after their time at Tulane. This is facilitated by the Office of Academic Enrichment.





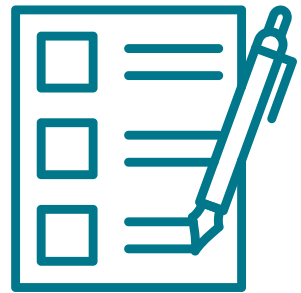
Peer Mentor Pathway

NTC offers a variety of opportunities for academic student leadership where upperclass students advise first-years on academic and social programming and resources.

- Colloquia & TIDES
- First Generation Career Ambassadors
- NTC Summer Experience
- Peer Success Leaders
- Research Ambassadors
- Study Abroad Peer Advisors
- Supplemental Instruction Leaders
- Writing Coaches and Tutors



Sophomore Year



**SOPHOMORE
SEPTEMBER**



**PEER MENTOR
LEADERSHIP**



**SOPHOMORE
RETREAT**



**HALFWAVE
THERE**



**SOPHOMORE
WEEK**



College Scholars Pathway

College Scholars join one of ten faculty-led, interdisciplinary cohorts to engage in discussion, participate in off-campus experiences, and build relationships with new friends and faculty.

- Premier opportunity for second-year Newcomb-Tulane College students
- An intellectual community designed to meet the full range of the undergraduate experience—intellectual, social, and civic
- Eligible students apply at the beginning of the spring semester of their first year
- All-scholar experiences such as the College Scholars Retreat, regular Community Dinners, and other special events build camaraderie across cohorts





Sample of the
2024-2025 College
Scholar Cohort Themes



**Building Flexibility of Mind:
Exploring Art & Architecture in New Orleans**

**Food Security, Food Access, and
Climate Change**

**Living/Leaving Legacies:
Change Agents in Louisiana**

Science, Technology, and Society

Zip Code > Genetic Code

Pathways to Immersive Research

1

WORKSHOPS & CURRICULUM

that boost a student's research skills, confidence, and knowledge

2

RESEARCH NETWORK

to match students with faculty who have openings in labs or projects

3

SUMMER RESEARCH

assist on a faculty member's research project on campus over the summer

4

ROLLING GRANT OPPORTUNITIES

to use for data collection, travel, equipment, and other expenses

5

SENIOR THESIS


as a culminating academic experience for all disciplines



Graduation Recognition

REGALIA & ACKNOWLEDGMENTS

All high achieving students on the Dean's List and/or earning Latin Honors will receive a designation on their college transcript. The Senior Awards Ceremony acknowledges those students who have excelled in their discipline, nominated by their faculty. Regalia and cords are given to students in the various honors tracks to distinguish them from their peers.





Fellowship Advising

High-achieving students benefit from special advising from Newcomb-Tulane College staff and faculty mentors about prestigious scholarships such as Rhodes, Marshall, Fulbright, Truman, and Goldwater, as well as other post-baccalaureate opportunities.





Thank You!

FIRST-YEAR HONORS SCHOLARS, CONTACT

Destiny Karash-Givens | Program Manager

dkarashgivens@tulane.edu

FIRST-YEAR HONORS SCHOLARS, WEBSITE

<https://firstyear.tulane.edu/honors>

